

ASSEMBLY DETAILS

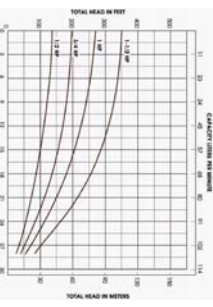
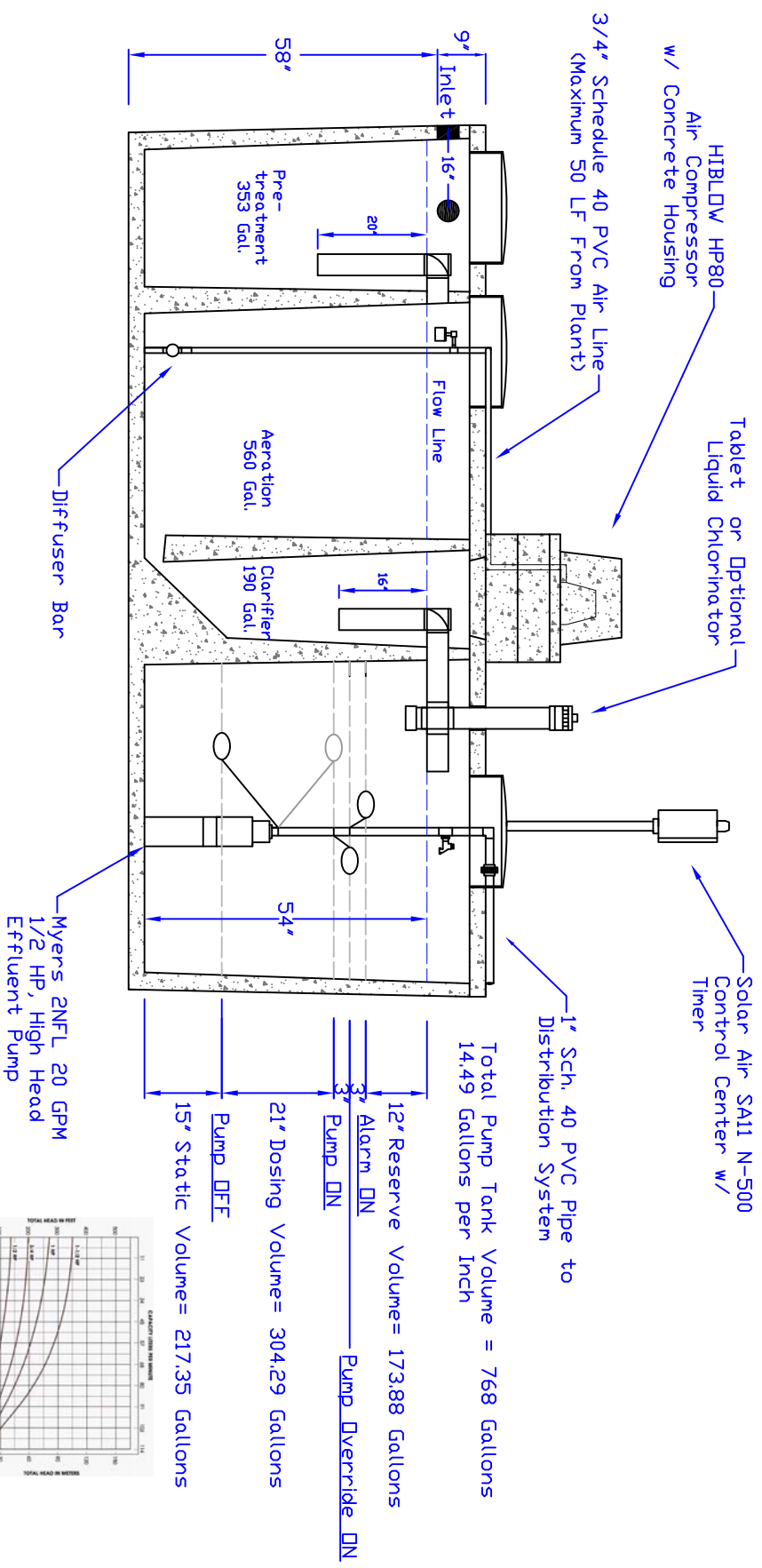
SOLAR AIR SA 11 N-500

INSTALLATION NOTES:

Plant Structure Material: Precast Concrete and Steel
 Plant Structure Material: Precast Concrete and Steel
 Treatment w/ Lid: 14,880 lbs.
 Treatment Capacity: 500 GPD
 BOD Loading: 1-1.5 lbs. per Day
 Electrical Requirement: 115 Volts, 60 Hz, Single Phase
 30 AMP, Grounded Receptacle

DIMENSIONS:

Outside Width: 63"
 Outside Length: 163.5"
 Maximum Burial Depth: 30" from slab top to grade
 Weight: 14,880 lbs. w/ Slab Top



1/2 HP 20 GPM Pump Curve

Drawn By: A.S.	Scale: 3/16"=1'
4	
3	
2	
1	
0	10/30/2007
REV.	DATE
	DESCRIPTION
	New Drawing

N.C. Pipe Precast Products
 9235 Main Street
 Needville, TX 77461
 888-331-5871
 www.ncpipe.com

Dwg. #: DSFSA11NS00AD-B



"Providing Concrete Environmental Solutions"