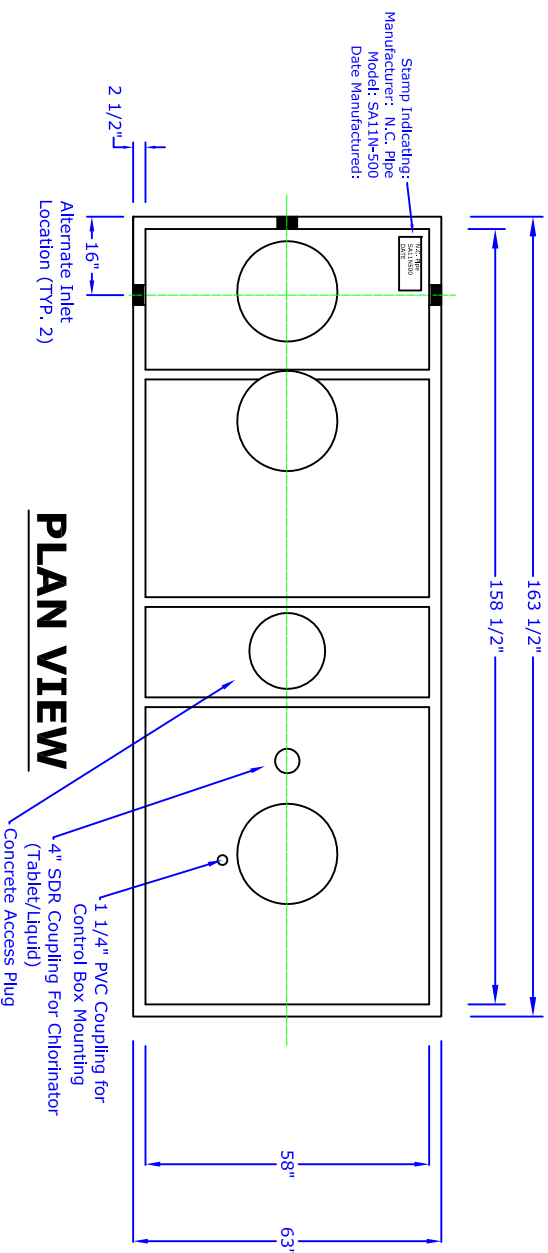


Product Details

Solar Air 500 GPD Aerobic Treatment Unit w/ Pump Tank Model: SA 11 N-500

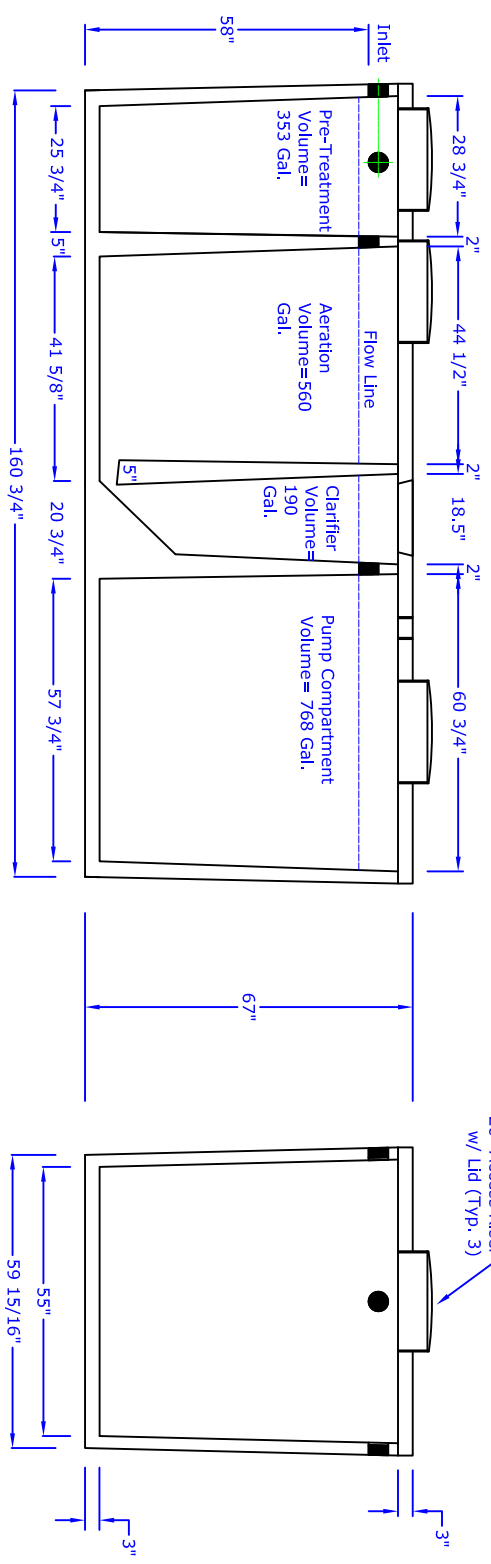


CONSTRUCTION NOTES:

Structural design specifications conform to latest ASTM C1227 specifications and meet all state and local codes. Unit is built according to and approved by National Wastewater Systems, Inc. Tank and slab top are designed for non-traffic loading. Concrete shall have a minimum 28 day compressive strength of 3500 PSI. Welded wire fabric shall meet ASTM A185. Reinforcing bars shall comply with ASTM A615 grade 60. Bar bending and placement shall comply with the latest ACI standards. All joints sealed using butyl rope mastic sealant meeting ASTM C 990-91 Weight: Bottom Section: 12,380 lbs. Slab Top: 2,500 lbs.

INSTALLATION NOTES:

The structure shall be placed on a compacted sand or granular base to insure uniform distribution of soil pressures. Maximum burial depth shall be 30" from slab top to grade. Please consult with manufacturer prior to lifting.



SIDE VIEW

Drawn By: A.S.	Scale: 1/4"=1'
4	
3	
2	
1	
0	10/30/2007
REV.	DATE
	DESCRIPTION
	New Drawing

N.C. Pipe Precast Products
9235 Main Street
Needville, TX 77461
888-331-5871
www.ncpipe.com

Dwg. #: OSFSA11N500-A