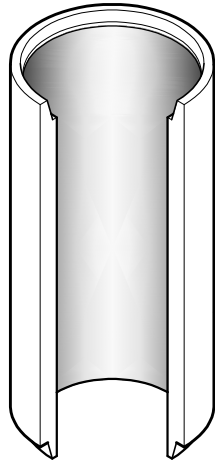


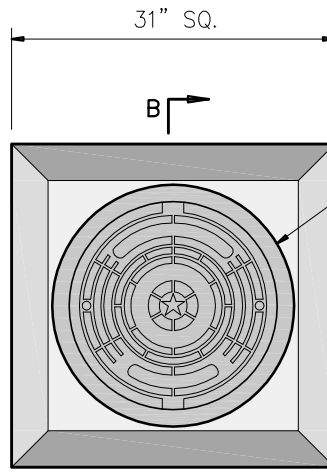
20" CAST IRON
REVERSIBLE
RING & COVER



**RISER SECTION
(RCP PIPE)**

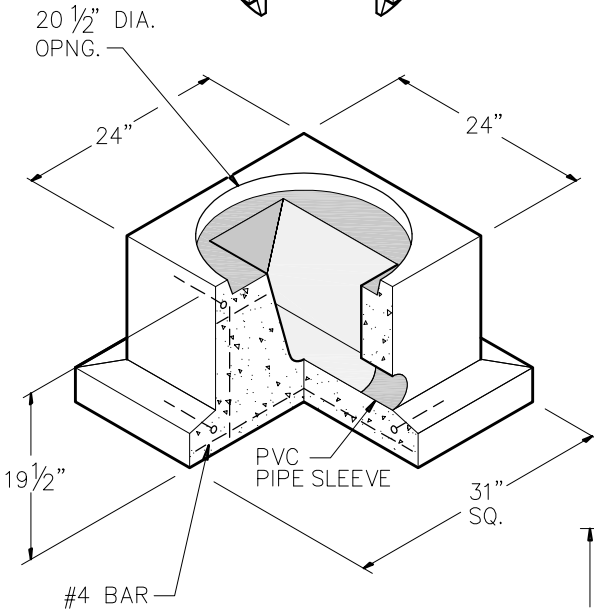
(15" I.D. X 4'
19 1/2" O.D.)
WEIGHT - 512 LBS

* FIELD CUT TO
REQUIRED LENGTH



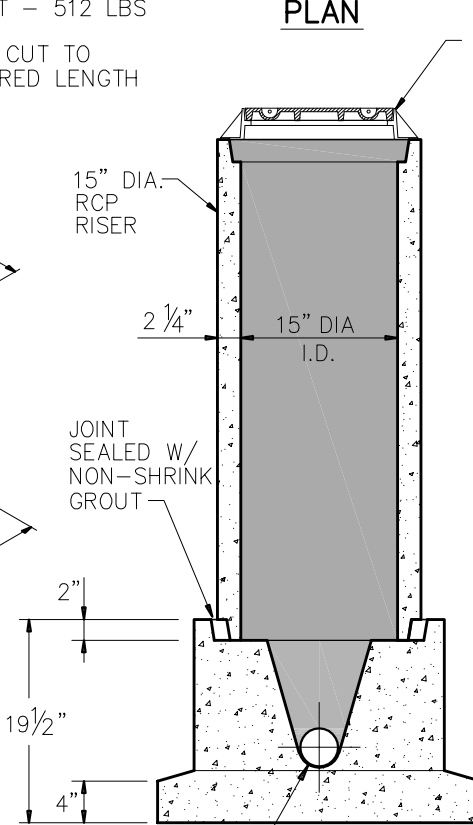
PLAN

20" CAST IRON
REVERSIBLE
RING & COVER
WEIGHT - 143 LBS

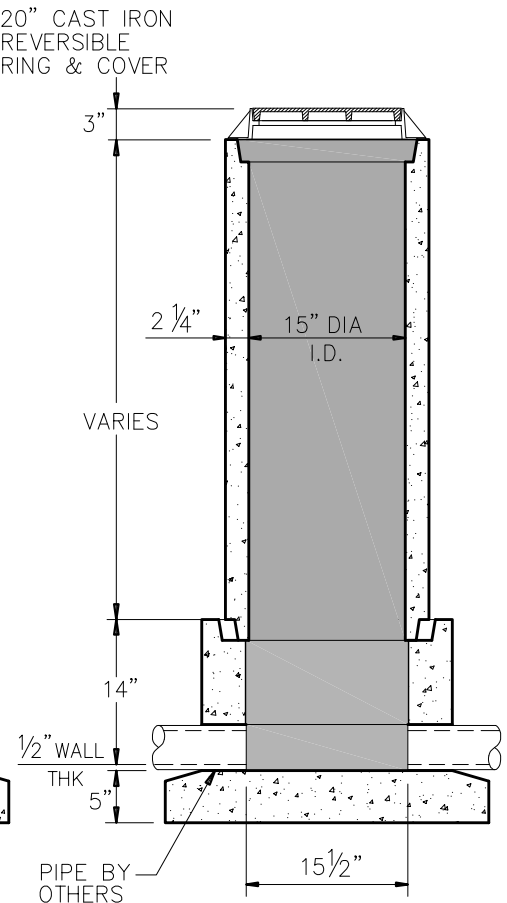


BASE

WEIGHT - 860 LBS



SECTION A-A



SECTION B-B

GENERAL NOTES:

- DESIGN SPECIFICATIONS CONFORM TO ALL STATE AND LOCAL CODES.
- 4500 PSI CONCRETE AT 28 DAYS
- ATSM A615, GRADE 60 REINFORCING
- H-20 LOADING
- ALL PIPE & JOINT CONNECTIONS TO BE GROUTED PER SPECIFICATIONS.

REINFORCEMENT (BASE)

#4 BARS AROUND PERIMETER OF BASE
#4 BARS @ 12" O.C.E.W. FLOOR



9235 Main Street #1
P.O. Box 507
Needville, Texas, 77461
1-888-331-5871

"Providing Concrete Environmental Solutions"

15" SAMPLE WELL
ASSEMBLY - STRAIGHT



NC-005-021

Scale: N.T.S.
* All Dimensions subject to allowable specification tolerances.

Date: 05/11/18

Rev Date: 09/27/23

Approved By: _____ Date: _____