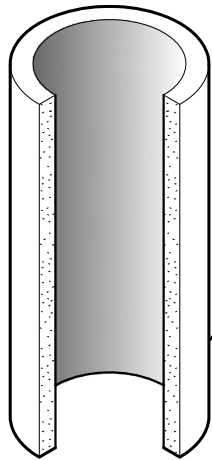


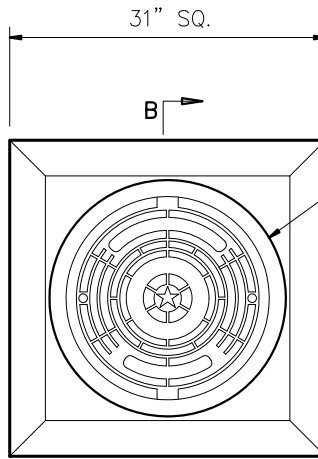
20" CAST IRON RING & COVER



**RISER SECTION (RCP PIPE)**

(15" I.D. X 4' 19 1/2" O.D.)  
WEIGHT - 512 LBS

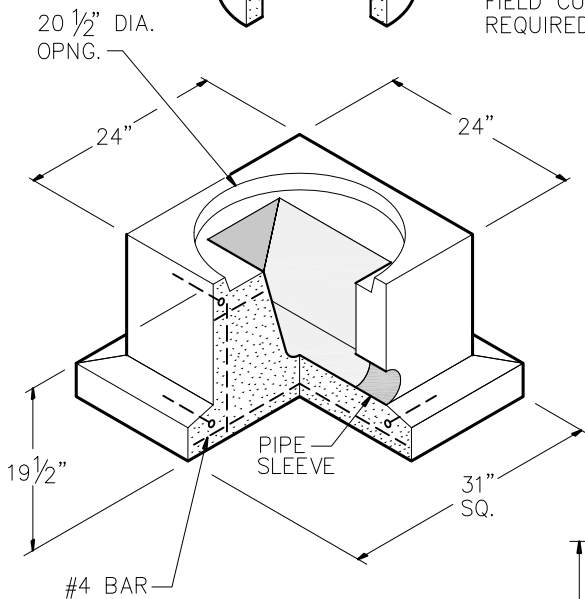
\* FIELD CUT TO REQUIRED LENGTH



31" SQ.

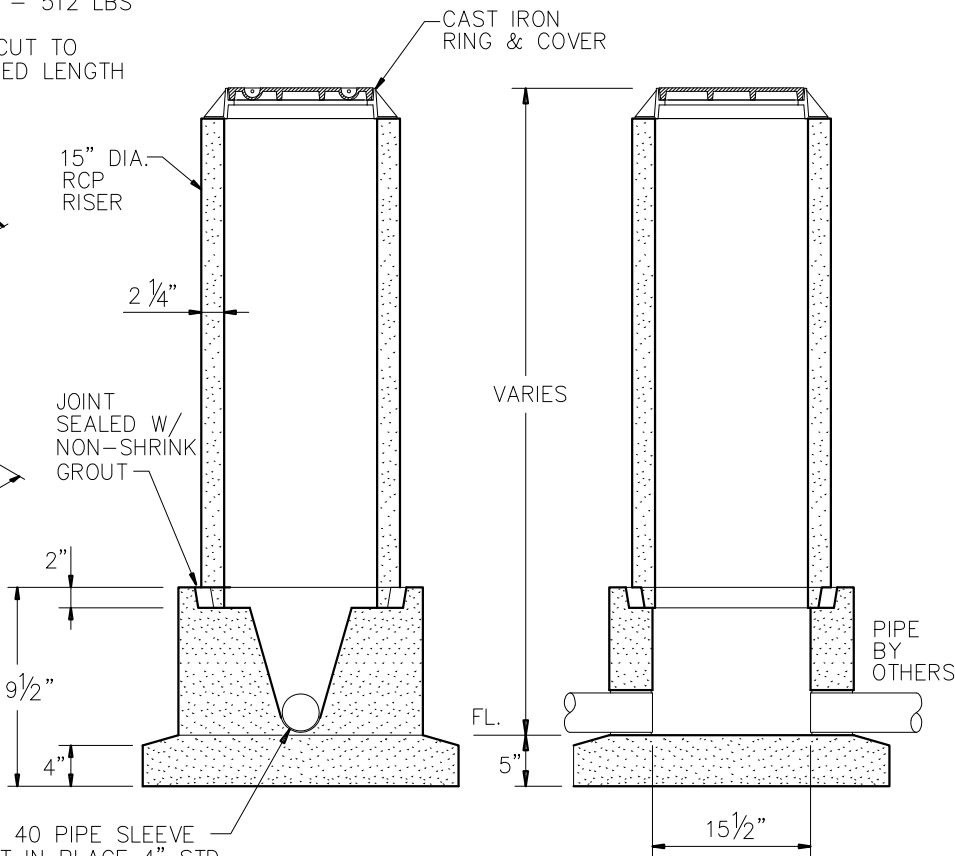
20" CAST IRON RING & COVER  
WEIGHT - 143 LBS

**PLAN**



**BASE**

WEIGHT - 860 LBS



**SECTION A-A**

**SECTION B-B**

**GENERAL NOTES:**

- DESIGN SPECIFICATIONS CONFORM TO ALL STATE AND LOCAL CODES.
- 4500 PSI CONCRETE AT 28 DAYS
- ATSM A615, GRADE 60 REINFORCING
- H-20 LOADING
- ALL PIPE & JOINT CONNECTIONS TO BE GROUTED PER SPECIFICATIONS.

**REINFORCEMENT (BASE)**

- #4 BARS AROUND PERIMETER OF BASE
- #4 BARS @ 12" O.C. E.W. FLOOR



15" SAMPLE WELL ASSEMBLY - STRAIGHT

"Providing Concrete Environmental Solutions"

NC-005-021

Scale: 1/2"=1'-0"  
\* All Dimensions subject to allowable specification tolerances.

Date: 05/11/18

Rev Date: 11/27/18

Approved By: \_\_\_\_\_ Date: \_\_\_\_\_