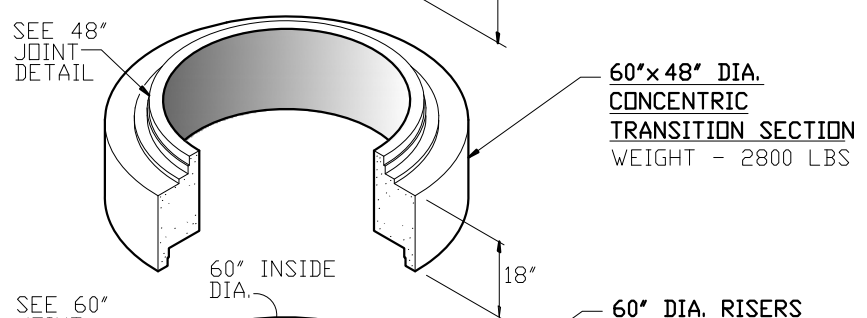
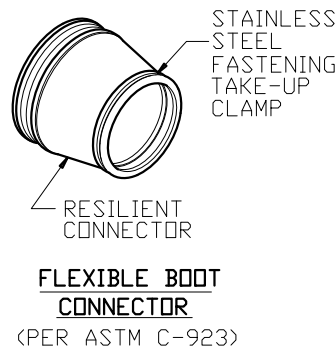
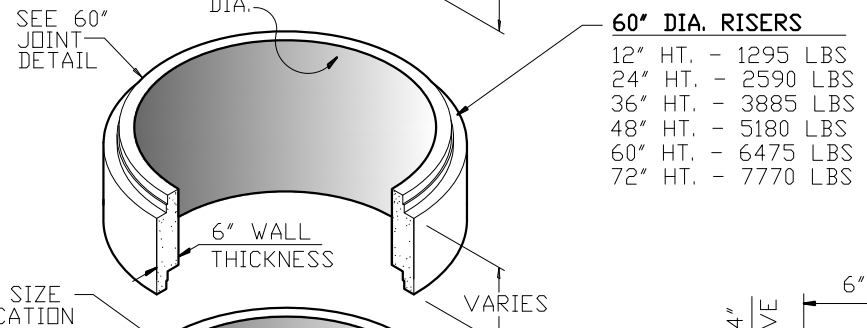


NOTE:
48" DIA. ECCENTRIC CONE & FLAT TOP AVAILABLE AS REQUIRED



NOTE:
PLEASE REFER TO NC PIPE FOR ALL PRECAST BASE HEIGHTS AND WEIGHTS.

NOTE:
OPTIONAL EXTENDED LIP AVAILABLE PER CUSTOMER SPECIFICATIONS.



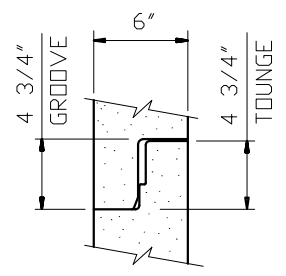
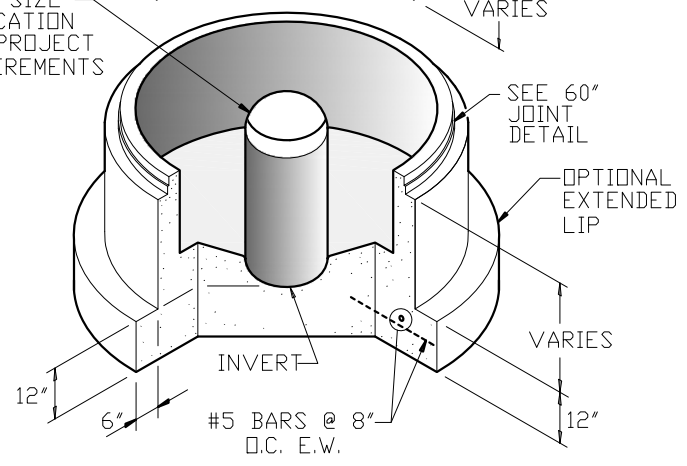
GENERAL NOTES:

- DESIGN SHALL MEET OR EXCEED ASTM C-478 SPECIFICATIONS
- 4500 PSI CONCRETE AT 28 DAYS
- ATSM A615, GRADE 60 REINFORCING
- HS 20 LOADING
- JOINT CONNECTIONS TO BE GASKETS CONFORMING TO ASTM C-443 REQUIREMENTS

OPTIONAL COATINGS & ADMIXTURES AVAILABLE:

- FE-100 THANE COAT
- BITUMASTIC
- XYPEX
- CONSHIELD

HOLE SIZE & LOCATION PER PROJECT REQUIREMENTS



9235 Main Street #1
P.O. Box 507
Needville, Texas, 77461
1-888-331-5871

60"/48" DIA.
SANITARY MANHOLE

"Providing Concrete Environmental Solutions"

NC-001-006

Scale: 1/4"=1'-0"
* All Dimensions subject to allowable specification tolerances.

Date: 02/26/18

Approved By: _____ Date: _____