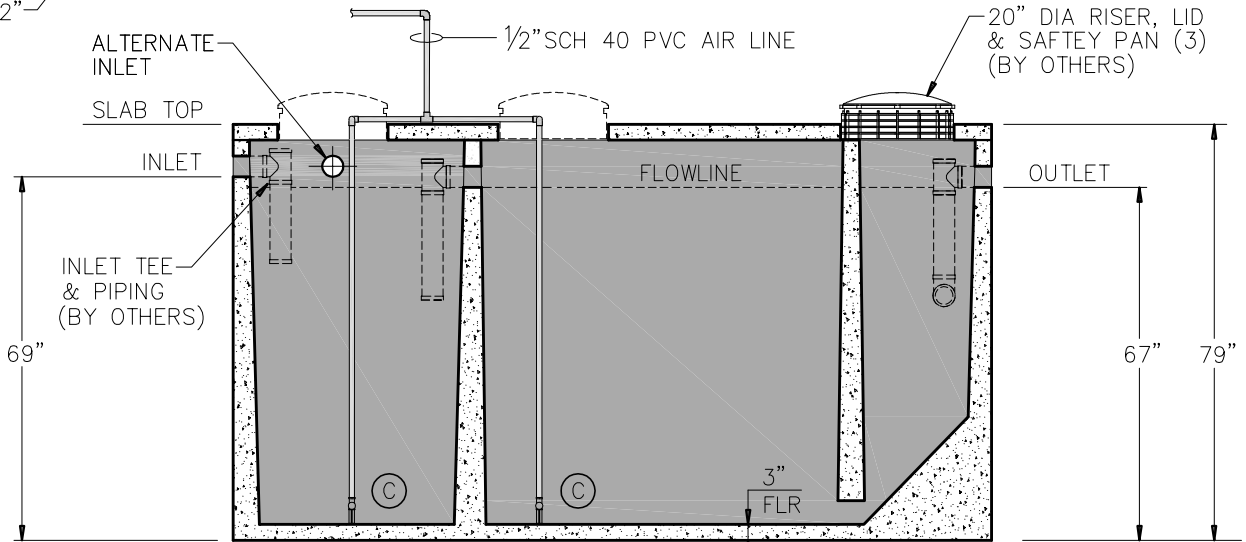
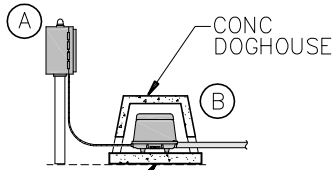
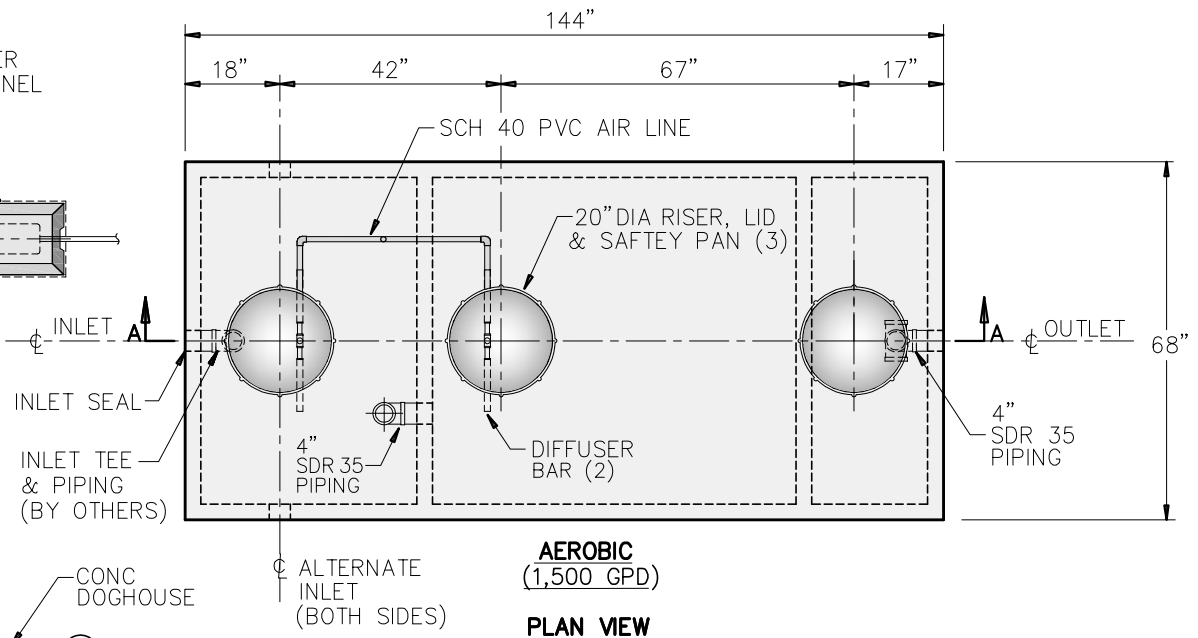
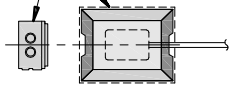


AIR COMPRESSOR & CONTROL PANEL (NOT MOUNTED ON ATU)



MODEL B-1500 ATU (1500 GPD)
 (WEIGHT 17,570 LBS)

SECTION A-A

GENERAL NOTES:

- DESIGN SHALL MEET OR EXCEED ASTM C-1227 SPECIFICATIONS
- 4000 PSI CONCRETE AT 28 DAYS
- ASTM A615, GRADE 60 REINFORCING
- TREATMENT CAPACITY: 1,500 GPD
- BOD LOADING: 4.5 LBS PER DAY
- TABLET OR LIQUID CHLORINATOR AVAILABLE

EQUIPMENT:

- (A) CONTROL PANEL W/ TIMER FOR NIGHT SPRAY APPLICATION (STD)
 OPTIONAL DRIP DOSING PANEL FOR SIMPLEX & DUPLEX PUMP
- (B) NUWATER B-1500 AIR COMPRESSOR (MAX 50 LFT FROM PLANT)
- (C) DIFFUSER BAR (2)

BURIAL DEPTH:

- MAXIMUM BURIAL DEPTH TO BE 40" FROM SLAB TOP TO GRADE



9235 Main Street #1
 P.O. Box 507
 Needville, Texas, 77461
 1-888-331-5871

"Providing Concrete Environmental Solutions"

NUWATER 1500 GPD
 DUEL AERATION
 AEROBIC TREATMENT UNIT

NC-008-018

Scale: N.T.S.
 * All Dimensions subject to allowable specification tolerances.

Date: 10/14/19

Rev Date: 03/21/24

Approved By: _____ Date: _____