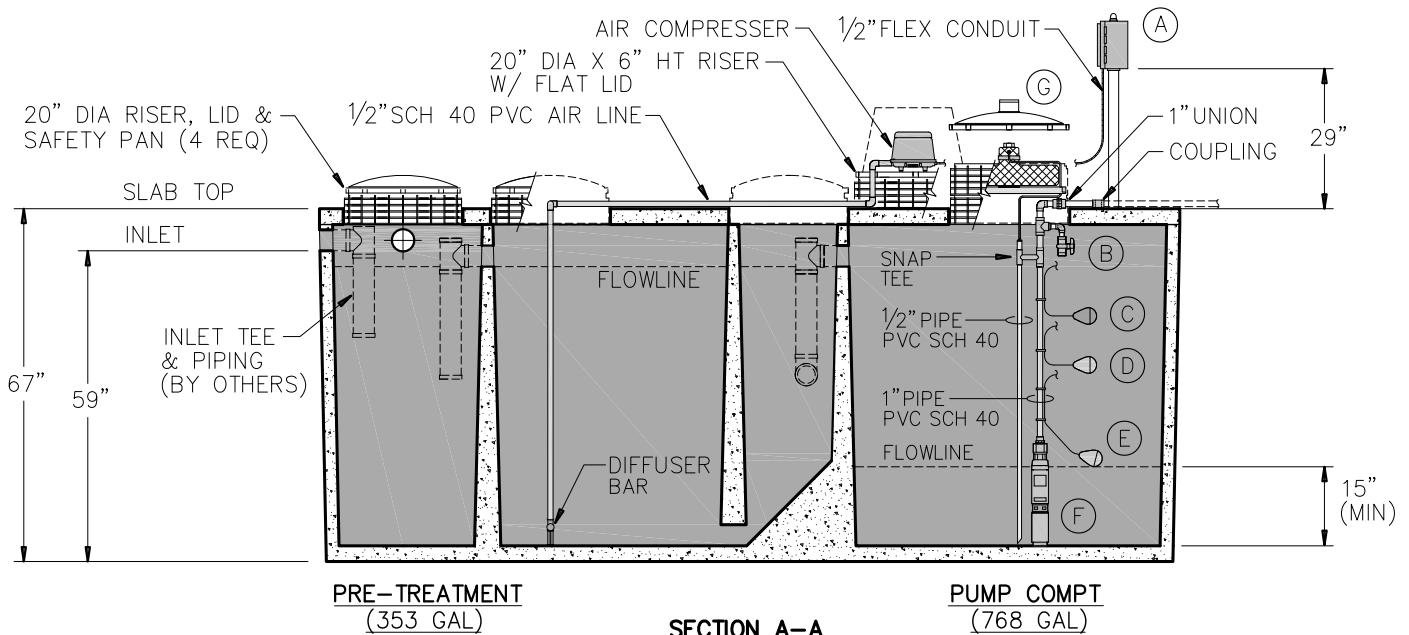


PLAN VIEW



SECTION A-A

GENERAL NOTES:

- DESIGN SHALL MEET OR EXCEED ASTM C-1227 SPECIFICATIONS
- 4000 PSI CONCRETE AT 28 DAYS
- ASTM A615, GRADE 60 REINFORCING
- TREATMENT CAPACITY: 600 GPD
- BOD LOADING: 1.5 LBS PER DAY

EQUIPMENT:

- TABLET OR LIQUID CHLORINATOR AVAILABLE
- ADDITIONAL RISERS AVAILABLE TO BRING ACCESS TO GRADE (NOT INCLUDED)

* SEE FLOAT CONFIGURATION DRAWING FOR FLOAT SET-UP

EQUIPMENT:

- (A) CONTROL PANEL W/ TIMER FOR NIGHT SPRAY APPLICATION (OPTIONAL DRIP DOSING PANEL AVAILABLE)
- (B) RELIEF VALVE
- (C) HIGH WATER ALARM FLOAT
- (D) PUMP OVERRIDE FLOAT
- (E) PUMP CONTROL FLOAT
- (F) 20 GPM 1/2 HIGH HEAD EFFLUENT PUMP
- (G) LIQUID CHLORINATOR - INCLUDES POLYETHYLENE 3 GAL CHLORINE RESERVOIR & 20" DIA X 6" HEIGHT (2 REQ) W/ RISER, LID & SAFETY PAN (STACKABLE)

WEIGHT:

- 14,550 LBS

MINIMUM EXCAVATION DIMENSIONS:

- WIDTH - 76"
- LENGTH - 176"

BURIAL DEPTH:

- MAXIMUM BURIAL DEPTH TO BE 40" FROM SLAB TOP TO GRADE



"Providing Concrete Environmental Solutions"

9235 Main Street #1
P.O. Box 507
Needville, Texas, 77461
1-888-331-5871

**NUWATER 600 GPD
ALL-IN-ONE
AEROBIC TREATMENT UNIT
MODEL: B-550 (ASSEMBLED)**

NC-008-002

Scale: N.T.S.
* All Dimensions subject to allowable specification tolerances.

Date: 07/25/19

Rev Date: 02/23/24

Approved By: _____ Date: _____