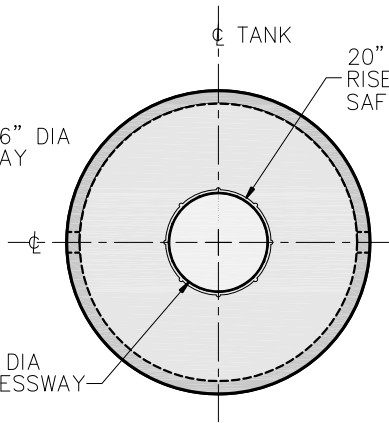
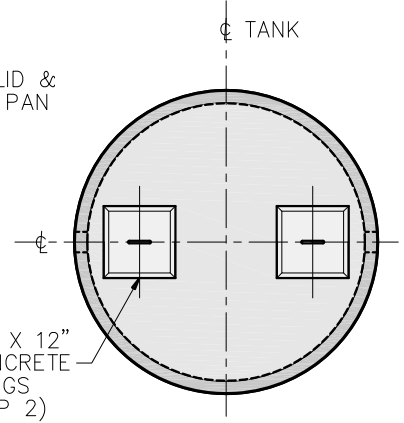


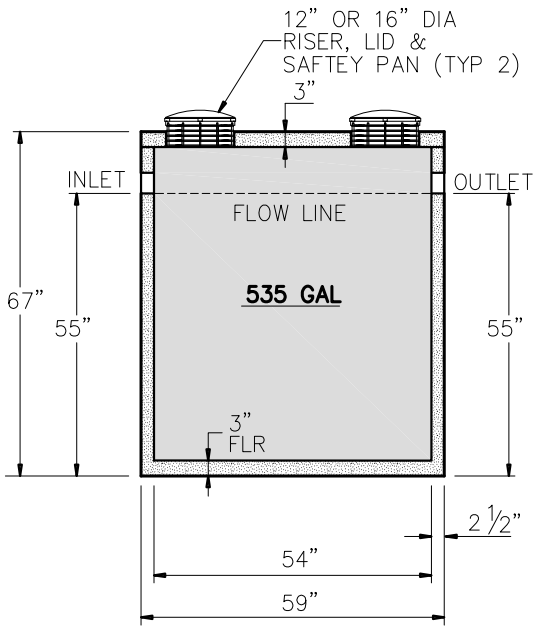
PLAN VIEW
STANDARD SLAB TOP – ST-1
 W/ 2-16" OR 12" ID X 6" HEIGHT
 RISER, LID & SAFETY PAN



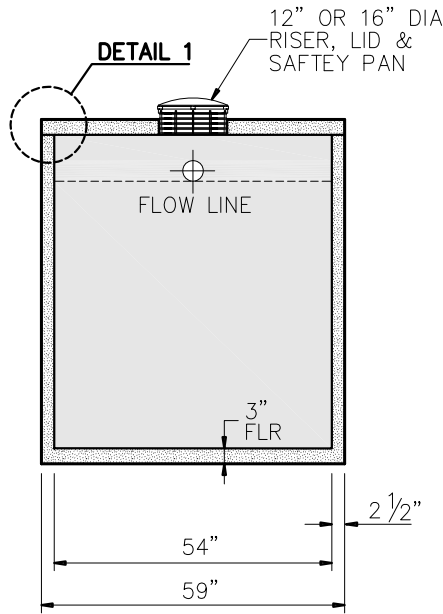
PLAN VIEW
(OPTIONAL) SLAB TOP – ST-2
 W/ 1-20" ID X 6" HEIGHT
 RISER, LID & SAFETY PAN



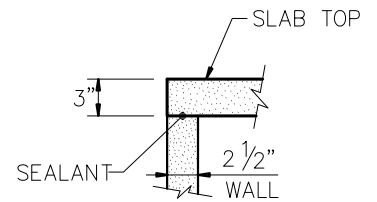
PLAN VIEW
(OPTIONAL) SLAB TOP – ST-3
 W/ 2-12" X 12" CONCRETE
 PLUGS CAST INTO LID



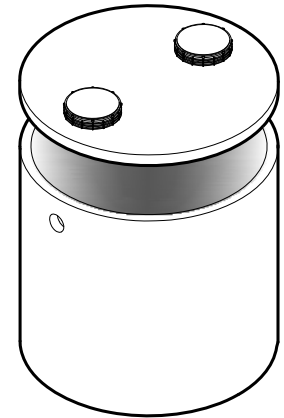
SECTION A-A
 W/ NO OFFSET



SECTION B-B



DETAIL 1



ISOMETRIC

GENERAL NOTES:

- DESIGN SHALL MEET OR EXCEED EXCEED ASTM C-1227 SPECIFICATIONS
- 4000 PSI CONCRETE AT 28 DAYS
- ASTM A615, GRADE 60 REINFORCING
- BAR BENDING AND PLACEMENT PER ACI STANDARDS

NOTE:

APPROX WEIGHTS INCLUDING
 SLAB TOP & BOTTOM SECTION
 WEIGHT – 4200 LBS
 CAPACITY – 535 GAL
 10.3 GALS PER INCH (APPROX)



9235 Main Street #1
 P.O. Box 507
 Needville, Texas, 77461
 1-888-331-5871

"Providing Concrete Environmental Solutions"

500 GALLON TANK
 (ROUND)
 'B' STYLE – W/ NO OFFSET

NC-004-022

Scale: 1/4"=1'-0"
 * All Dimensions subject to
 allowable specification tolerances.

Date: 04/10/19

Rev Date:

Approved By: _____ Date: _____