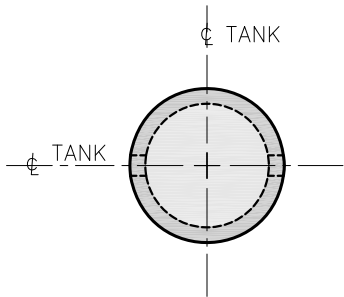
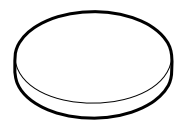


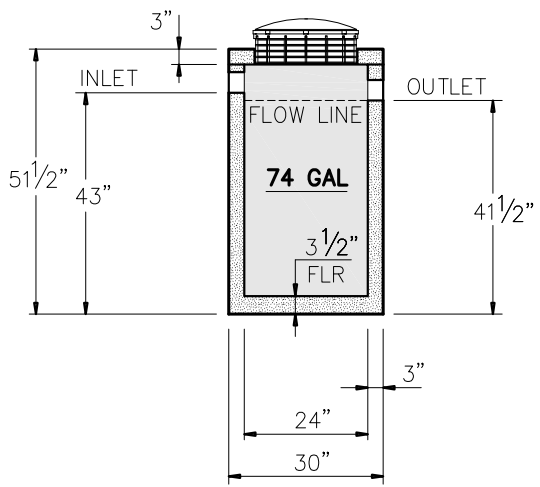
**PLAN VIEW**  
**(STANDARD) SLAB TOP - ST-1**  
 W/ 1-20" ID X 6" HEIGHT  
 RISER, LID & SAFETY PAN



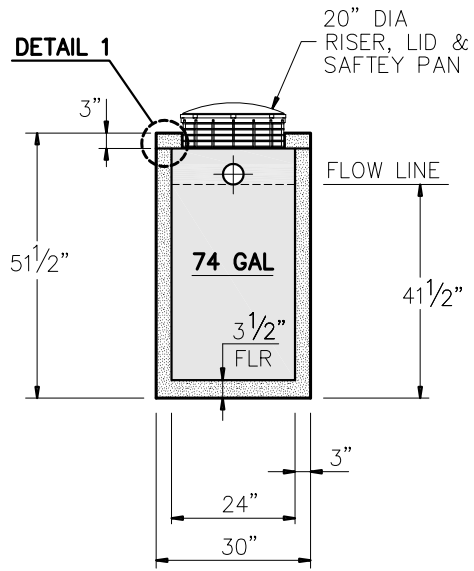
**PLAN VIEW**  
**(OPTIONAL) SLAB TOP - ST-2**  
 SOLID CONCRETE LID



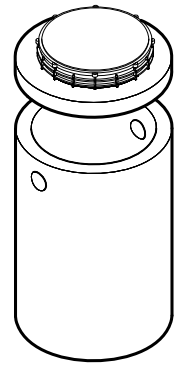
**ISOMETRIC VIEW**  
**(OPTIONAL) SLAB TOP - ST-2**  
 SOLID CONCRETE LID



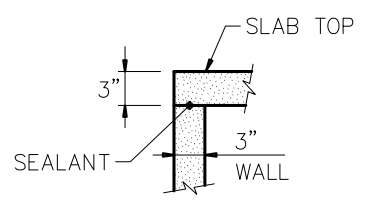
**SECTION A-A**



**SECTION B-B**



**ISOMETRIC VIEW**  
**(STANDARD)**  
 W/ 20" RISER, LID  
 SAFETY PAN



**DETAIL 1**

**GENERAL NOTES:**

- DESIGN SHALL MEET OR EXCEED EXCEED ASTM C-1227 SPECIFICATIONS
- 4000 PSI CONCRETE AT 28 DAYS
- ASTM A615, GRADE 60 REINFORCING
- BAR BENDING AND PLACEMENT PER ACI STANDARDS

**NOTE:**

APPROX WEIGHTS INCLUDING  
 SLAB TOP & BOTTOM SECTION  
 WEIGHT - 1140 LBS  
 CAPACITY - 74 GAL



9235 Main Street #1  
 P.O. Box 507  
 Needville, Texas, 77461  
 1-888-331-5871

70 GALLON TANK  
 (ROUND)

NC-004-024

Scale: 1/4"=1'-0"  
 \* All Dimensions subject to allowable specification tolerances.

Date: 04/12/19

Rev Date:

Approved By: \_\_\_\_\_ Date: \_\_\_\_\_