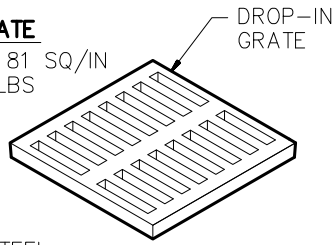


CAST IRON ASTM A-48 CLASS 30B

14" X 14"

CAST IRON GRATE

OPEN AREA - 81 SQ/IN
WEIGHT - 25 LBS

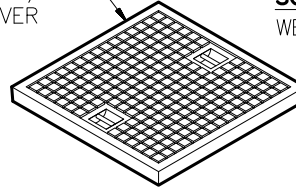


DROP-IN
SOLID/
COVER

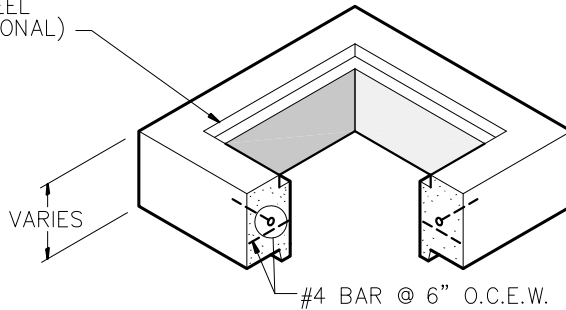
14" X 14"

**CAST IRON
SOLID COVER (OPTIONAL)**

WEIGHT - 30 LBS



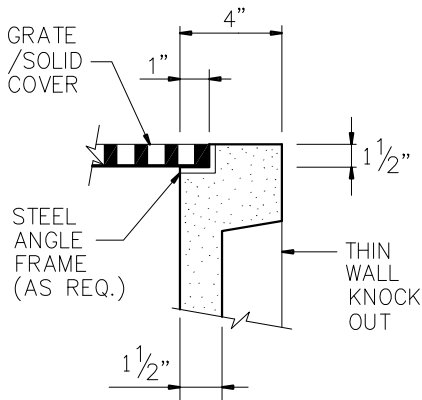
CAST-IN STEEL
FRAME (OPTIONAL)



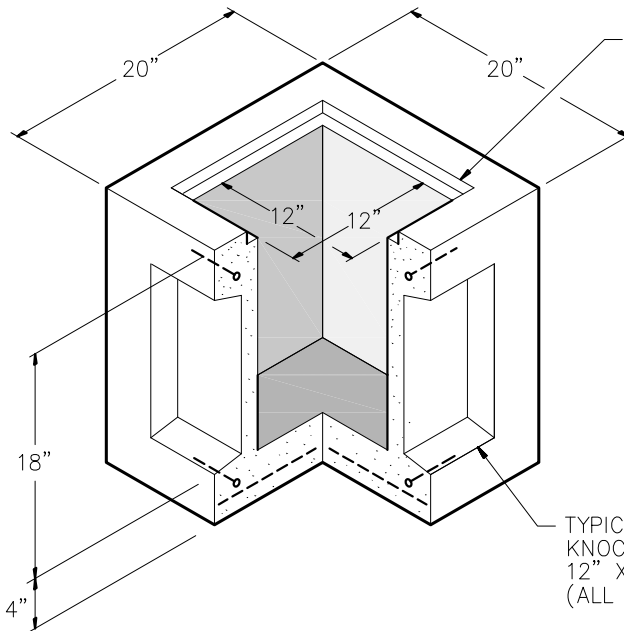
RISER SECTION (OPTIONAL)

6" HEIGHT - 135 LBS
12" HEIGHT - 270 LBS

NOTE:
RISER & BASE SECTIONS
AVAILABLE WITH OR WITHOUT
STEEL CAST-IN FRAME



TYP WALL DETAIL



BASE SECTION

BASE - 310 LBS

REINFORCEMENT

#4 BARS AROUND PERIMETER
OF BASE
#4 BARS @ 12" O.C.E.W. FLOOR

GENERAL NOTES:

- DESIGN SHALL MEET OR EXCEED ASTM C-913 SPECIFICATIONS.
- 4500 PSI CONCRETE AT 28 DAYS
- ATSM A615, GRADE 60 REINFORCING
- H-20 LOADING
- ALL PIPE & JOINT CONNECTIONS TO BE GROUTED PER SPECIFICATIONS.



"Providing Concrete Environmental Solutions"

9235 Main Street #1
P.O. Box 507
Needville, Texas, 77461
1-888-331-5871

14" X 14"
CATCH BASIN
(12" X 12" X 18" I.D.)

NC-003-002

Scale: 3/4"=1'-0"
* All Dimensions subject to allowable specification tolerances.

Date: 03/19/18

Rev Date: 10/18/18

Approved By: _____ Date: _____