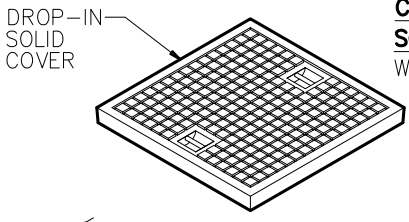
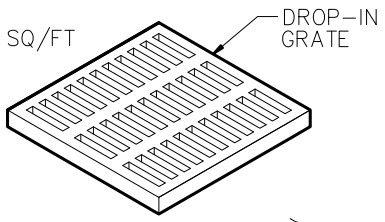


CAST IRON ASTM A-48 CLASS 30B

21" X 21"

CAST IRON GRATE

OPEN AREA - 203 SQ/FT
WEIGHT - 95 LBS



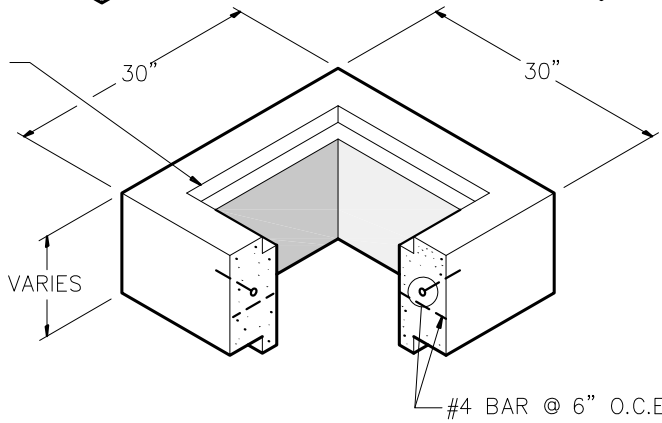
21" X 21"

CAST IRON

SOLID COVER (OPTIONAL)

WEIGHT - 100 LBS

CAST-IN STEEL FRAME (OPTIONAL)

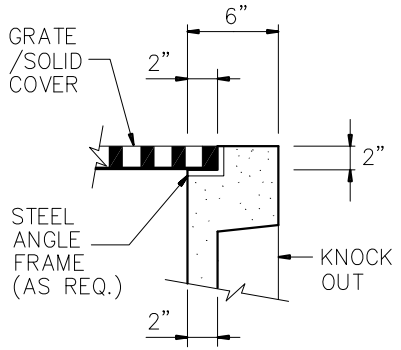


RISER SECTION (OPTIONAL)

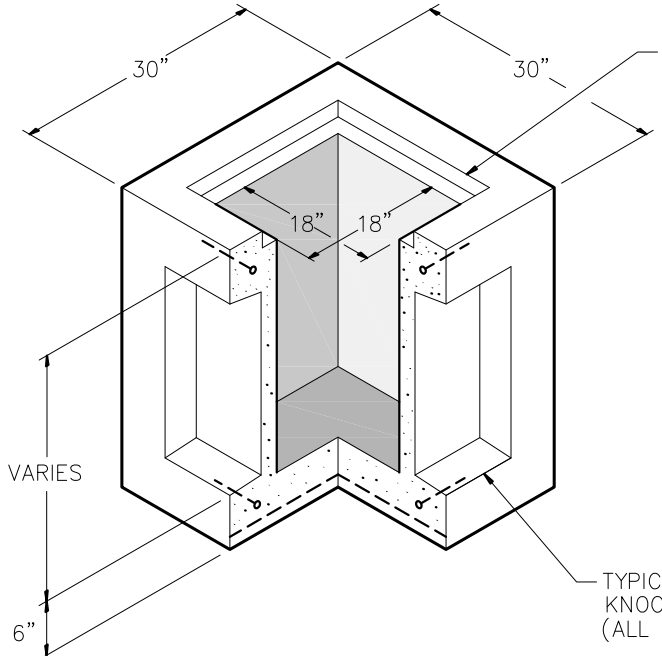
6" HEIGHT - 300 LBS
12" HEIGHT - 600 LBS
24" HEIGHT - 1200 LBS

NOTE:
(OPTIONAL)
ADA GRATE AVAILABLE

NOTE:
AVAILABLE WITH OR WITHOUT
STEEL CAST-IN FRAME



TYP WALL DETAIL



CAST-IN STEEL FRAME (OPTIONAL)
(SEE WALL DETAIL)

BASE SECTION

24" HEIGHT - 1200 LBS
30" HEIGHT - 1500 LBS (STD. HT.)

REINFORCEMENT

#4 BARS AROUND PERIMETER
OF BASE
#4 BARS @ 12" O.C.E.W. FLOOR

GENERAL NOTES:

- DESIGN SHALL MEET OR EXCEED ASTM C-913 SPECIFICATIONS.
- 4500 PSI CONCRETE AT 28 DAYS
- ATSM A615, GRADE 60 REINFORCING
- H-20 LOADING
- ALL PIPE & JOINT CONNECTIONS TO BE GROUTED PER SPECIFICATIONS.

CATCH BASIN



9235 Main Street #1
P.O. Box 507
Needville, Texas, 77461
1-888-331-5871

"Providing Concrete Environmental Solutions"

18" X 18"
CATCH BASIN

NC-003-004

Scale: 1/2"=1'-0"
* All Dimensions subject to allowable specification tolerances.

Date: 03/19/18

Rev Date: 10/18/18

Approved By: _____ Date: _____