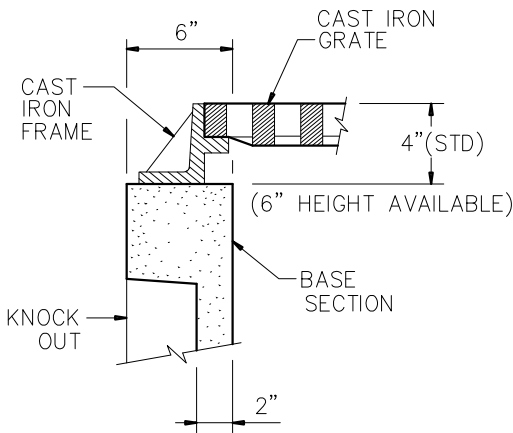
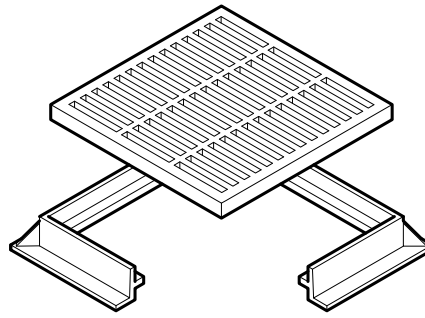


CAST IRON ASTM A-48 CLASS 30B



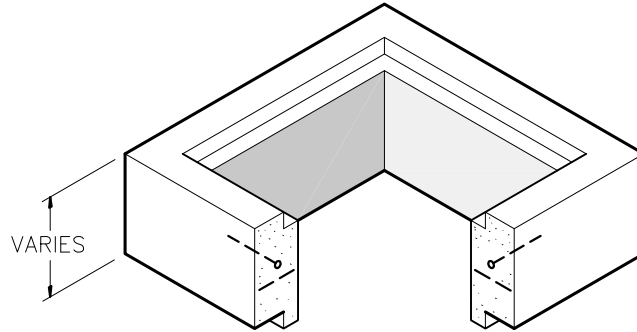
TYP WALL SECTION



CAST IRON FRAME & GRATE

V5624 OF EQ
OPEN AREA - 300 SQ/IN
WEIGHT - 283 LBS
(FRAME & GRATE)

NOTE:
FRAME & GRATE FURNISHED
LOOSE FOR PAVING AREA

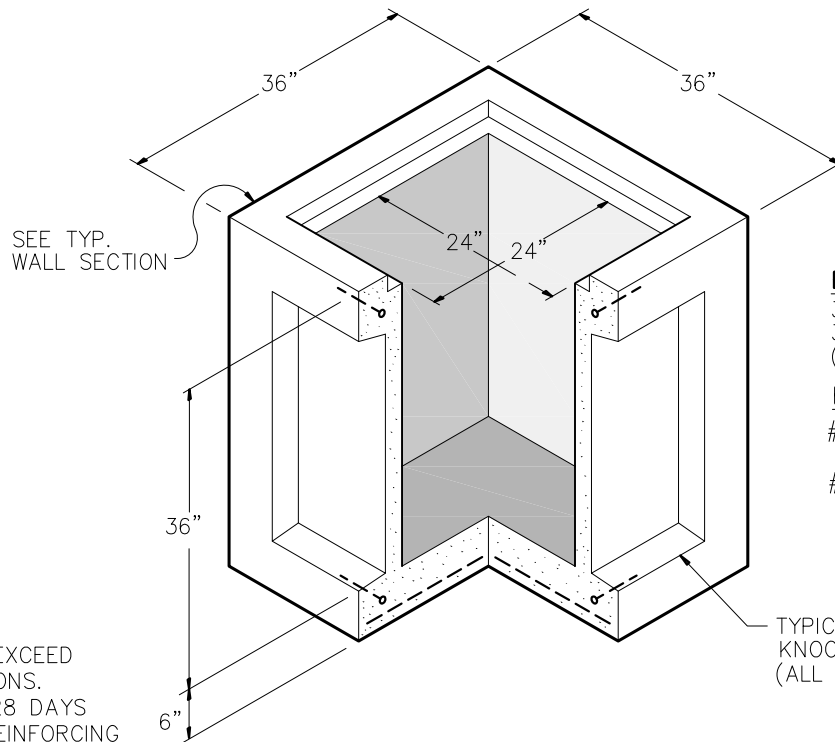


RISER SECTION (OPTIONAL)

6" HEIGHT - 375 LBS
12" HEIGHT - 750 LBS
24" HEIGHT - 1500 LBS

REINFORCEMENT (RISER)

#4 BAR @ 6" O.C.E.W.



BASE SECTION

30" HEIGHT - 2000 LBS
36" HEIGHT - 2425 LBS
(STD. HT.)

REINFORCEMENT (BASE)

#4 BARS AROUND PERIMETER
OF BASE
#4 BARS @ 12" O.C.E.W. FLOOR

GENERAL NOTES:

- DESIGN SHALL MEET OR EXCEED ASTM C-913 SPECIFICATIONS.
- 4500 PSI CONCRETE AT 28 DAYS
- ATSM A615, GRADE 60 REINFORCING
- H-20 LOADING
- ALL PIPE & JOINT CONNECTIONS TO BE GROUTED PER SPECIFICATIONS.



9235 Main Street #1
P.O. Box 507
Needville, Texas, 77461
1-888-331-5871

"Providing Concrete Environmental Solutions"

TYPE 'A' INLET
24" X 24"
V5600 SERIES

NC-003-013

Scale: 1/2"=1'-0"
* All Dimensions subject to allowable specification tolerances.

Date: 04/26/18

Rev Date: 10/18/18

Approved By: _____ Date: _____