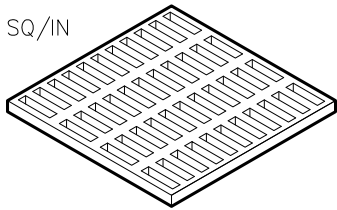


CAST IRON ASTM A-48 CLASS 30B

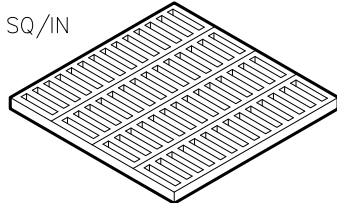
**NARROW SLOT  
GRATE (OPTIONAL)**

V4880-3 OR EQ.  
OPEN AREA - 442 SQ/IN  
WEIGHT - 195 LBS



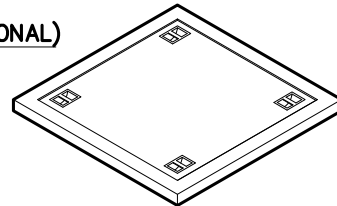
**ADA GRATE (OPTIONAL)**

V4880-ADA OR EQ.  
OPEN AREA - 283 SQ/IN  
WEIGHT - 235 LBS



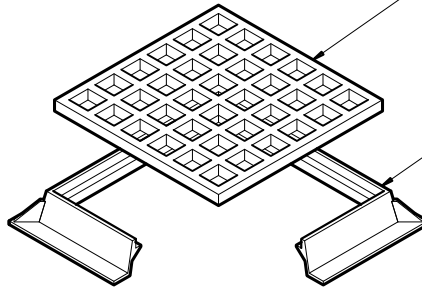
**SOLID COVER (OPTIONAL)**

WEIGHT - 195 LBS



**30" X 30"  
CAST IRON GRATE**

V4880-1 OR EQ. (STD)  
OPEN AREA - 473 SQ/IN  
WEIGHT - 190 LBS



**CAST IRON FRAME**

V4880 OR EQ.  
WEIGHT - 235 LBS

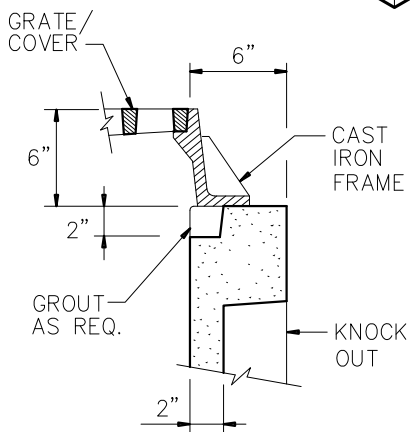
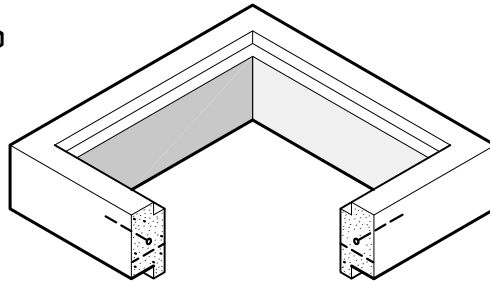
NOTE:  
FRAME & GRATE FURNISHED  
LOOSE FOR PAVING AREA

**RISER SECTION (OPTIONAL)**

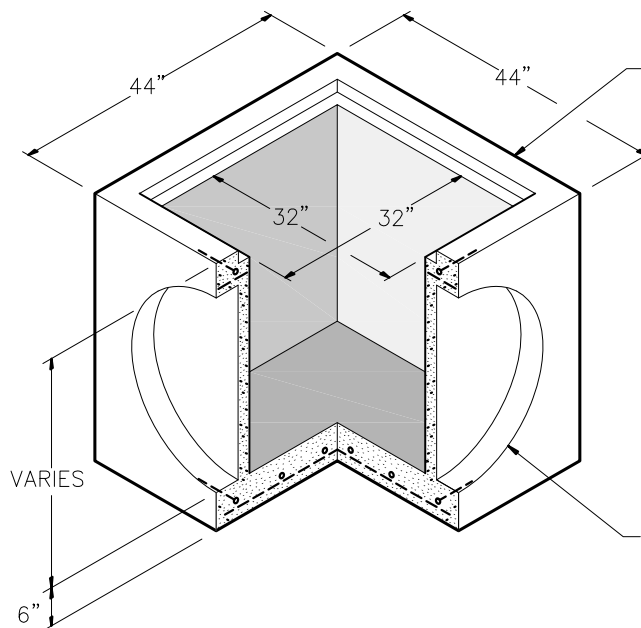
6" HEIGHT - 475 LBS  
12" HEIGHT - 950 LBS  
24" HEIGHT - 1900 LBS  
36" HEIGHT - 2850 LBS

**REINFORCEMENT (RISER)**

#4 BARS @ 6" O.C.E.W.



TYP WALL DETAIL



**BASE SECTION**

36" HEIGHT - 3860 LBS (STD. HT.)  
42" HEIGHT - 4230 LBS

**REINFORCEMENT (BASE)**

#4 BARS AROUND PERIMETER OF BASE  
#4 BARS @ 12" O.C.E.W. FLOOR

**GENERAL NOTES:**

- DESIGN SHALL MEET OR EXCEED ASTM C-913 SPECIFICATIONS.
- 4500 PSI CONCRETE AT 28 DAYS
- ATSM A615, GRADE 60 REINFORCING
- H-20 LOADING
- ALL PIPE & JOINT CONNECTIONS TO BE GROUTED PER SPECIFICATIONS.



9235 Main Street #1  
P.O. Box 507  
Needville, Texas, 77461  
1-888-331-5871

TYPE 'A' INLET  
32" X 32"

"Providing Concrete Environmental Solutions"

NC-003-014

Scale: 1"=1'-0"  
\* All Dimensions subject to allowable specification tolerances.

Date: 04/22/18

Rev Date: 10/18/18

Approved By: \_\_\_\_\_ Date: \_\_\_\_\_