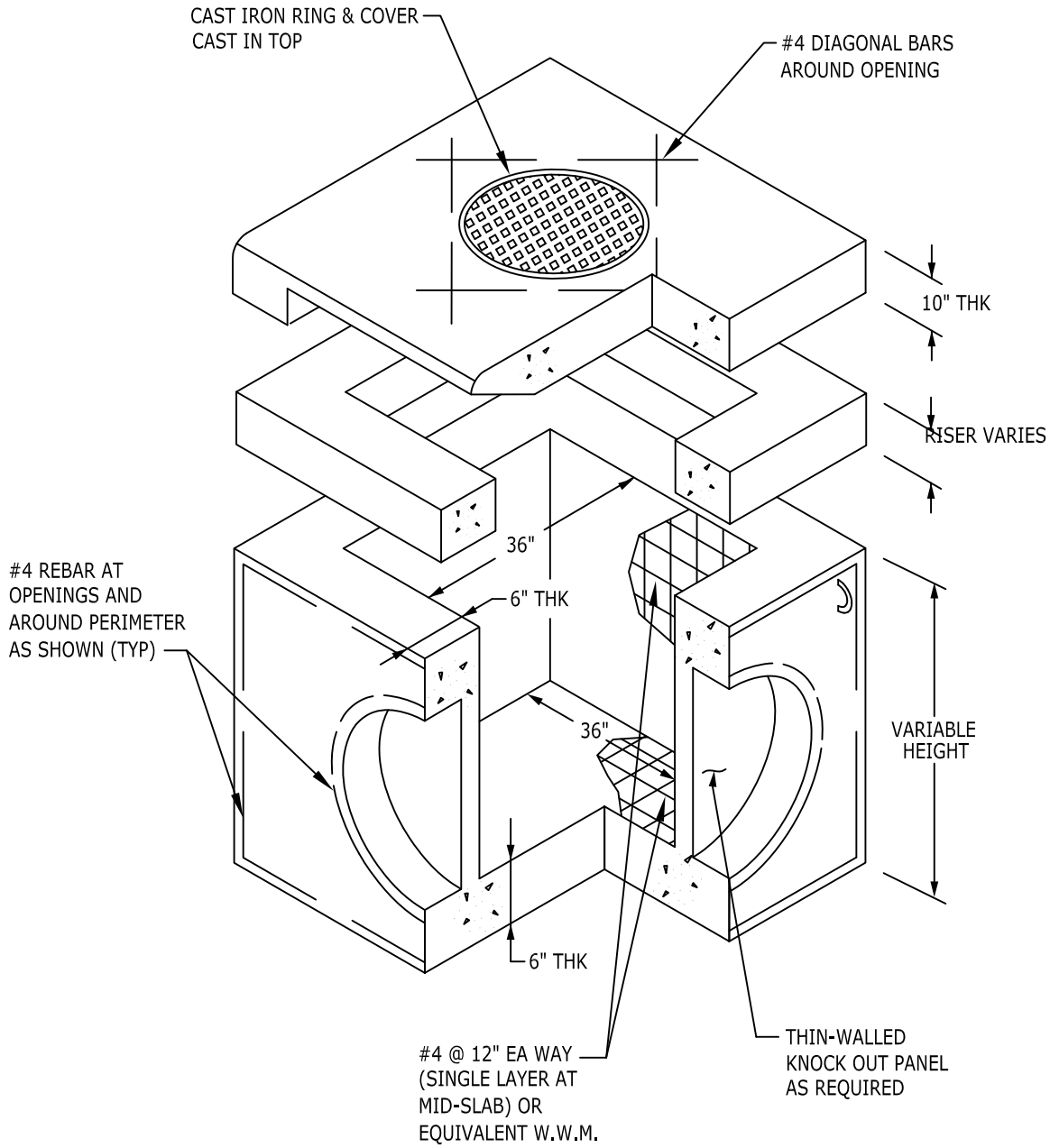


# 4000 PSI CONCRETE GRADE 60 REINFORCING HS 20 LOADING

MAXIMUM DEPTH OF BURY= 10 FT



ELEVATION VIEW



9235 Main Street #1  
P.O. Box 507  
Needville, Texas, 77461  
1-888-331-5871

## PRECAST TYPE 'C' INLET 36" x 36" I.D.

"Providing Concrete Environmental Solutions"

Date: 16 NOV 2012

File: NC CINLET\_10

Scale: 1"=1'-0"  
\* All Dimensions subject to allowable specification tolerances.

Approved By: \_\_\_\_\_ Date: \_\_\_\_\_